

BREATHE NEW LIFE INTO ANY CMM

The Quadrant rotary table range is designed specifically for metrology use, offering an array of improvements to a CMM for a fraction of the cost of replacing it.

Increase measurable volume

Installing a Quadrant rotary table means that you're using the working space in your CMM more efficiently. That allows you to measure larger parts in the same area. The low profile design of QuadSlimline offers even more efficient use of space.

Improve uncertainty and accuracy

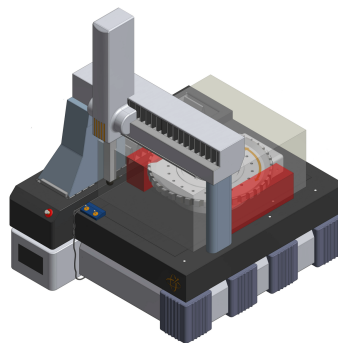
CMMs usually perform at their best when they are not at the extremities of their measurement range. By using a Quadrant rotary table, probe travel is reduced, improving measurement performance.

Reduce inspection time

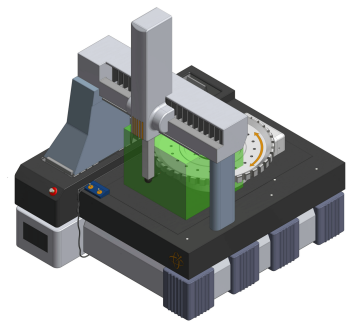
When a Quadrant rotary table is installed, probe travel time on a CMM is reduced. The less time the probe spends traveling, the more time it can spend measuring, reducing bottlenecks!

Use on any CMM

The Quadrant range is designed to work with any CMM that supports fourth axis control, making retrofitting and installation easy. No fourth axis capability in your CMM? No problem, simply use the optional QuadMotion controller to add it.



Without Quadrant
Red Zone: Inaccessible measurement area for larger parts



With Quadrant
Green Zone: Required measurement volume for larger parts

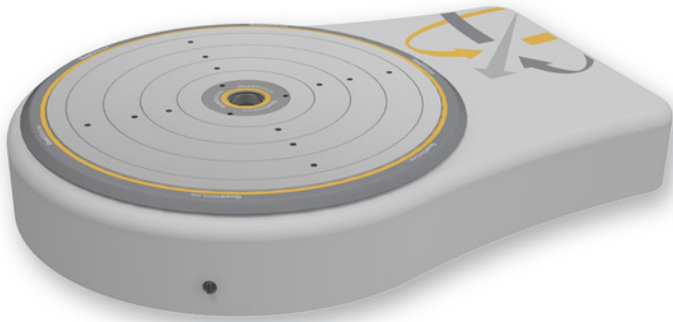
The Quadrant Range

QuadSlimline2

Our most popular unit, QuadSlimline2 is the global standard for CMM rotary tables, with hundreds of installations worldwide.

Features:

- Compact, low profile design maximizes efficient use of space, with working heights of 150mm, 160mm and 200mm available
- Optional air flotation base, allows table to be easily moved around and out of workspace
- Available in a range of sizes including $\varnothing 400$, $\varnothing 600$, $\varnothing 800$ and $\varnothing 1000$ mm
- Load capacities of up to 5,000kg (11,000lbs)
- Zero backlash drive
- Angular positioning accuracy of up to 1 arcsecond (0.0003°)

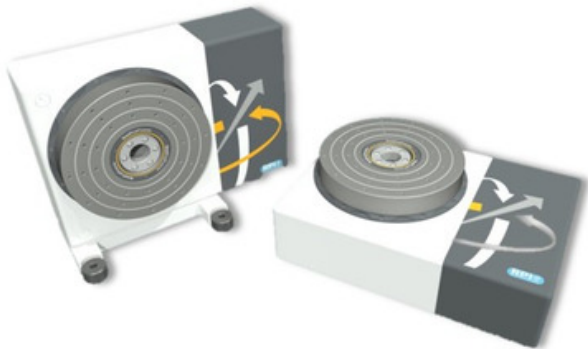


QuadDualPurpose2

Cleverly designed to operate in either vertical or horizontal orientations, QuadDualPurpose2 is accurate and flexible.

Features:

- Dual axis design
- Powerful pneumatic clamp
- Available in a range of sizes including $\varnothing 250$, $\varnothing 300$, and $\varnothing 400$ mm
- Load capacities up to 1000kgs (2,200lbs) or 500Nm
- Angular positioning accuracy of up to 1 arcsecond (0.0003°)



QuadUniversal

A simple, entry level unit that is easy and cost effective to implement.

Features:

- Compact, low profile design maximizes efficient use of space, with working heights of 150mm, 160mm and 200mm available
- Optional air flotation base, allows table to be easily moved around and out of workspace
- Available in a range of sizes including $\varnothing 400$, $\varnothing 600$, $\varnothing 800$ and $\varnothing 1000$ mm
- Load capacities of up to 5,000kg (11,000lbs)
- Near zero backlash drive
- Angular positioning accuracy of 6.5 arcseconds (0.002°)

